

Frequently Asked Questions

Ref: ENQA04

1. What is the minimum and maximum canvas thickness which can be used?
2. Is it possible to use even thicker canvas?
3. Finding the right place for the button (with receiver pre-mounted):
4. Finding the right place for the receiver (with button pre-mounted):
5. Does PERFIX® cause wrinkles?
6. Can PERFIX® always easily replace other systems?
7. Are tool bits available for pliers?
8. Can you tell on which side of the button the hook is?

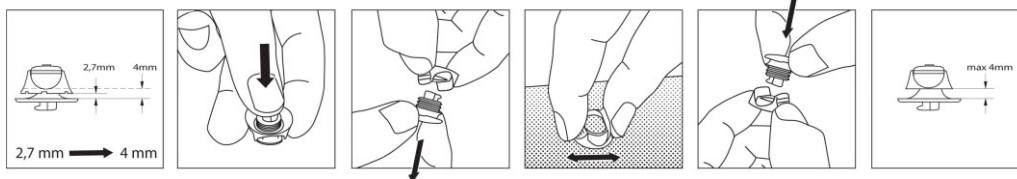
1. What is the minimum and maximum canvas thickness which can be used?

Minimum thickness is 1 mm

Maximum thickness is 2,7 mm (used to be 2 mm)

2. Is it possible to use even thicker canvas?

Press the interior housing with button out of the exterior housing and sand off the teeth with sandpaper (see illustration). A maximum canvas thickness of 4 mm can be used if the housing is rubbed down even further than the teeth.



3. Finding the right place for the button (with receiver pre-mounted):



Use the installation pin:

Place the installation pin in the receiver, stretch the canvas over the pin and secure it with the provided cap. The resulting tiny hole in the canvas marks the centre of the button position (diameter 13 mm). Remove the installation pin by pushing down on its grip-plate.

Installation pin + cap (code 9600)



TIP: The indentation on the base-plate of the installation pin indicates the minimum distance which the button requires (see illustration).

TIP: The diameter of the provided cap is the same as the button. In situations where the canvas is to be secured under an angle, this cap guarantees the correct spacing

4. Finding the right place for the receiver (with button pre-mounted):

Use the drill stencil:



Drill-stencil (code 9700)

Stretch the canvas with the button in the right position, hold the button in place and slide the drill stencil under the canvas until it connects with the hook of the button. Hold the drill stencil at this position while you carefully remove the canvas and button. Flip the drill plate over and drill through the hole (3.2 mm). Mount the receiver.



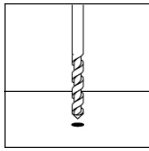
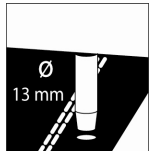



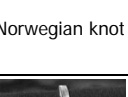
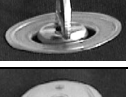
By using the drill stencil you won't need to make any marks, the drill won't slide about and a lot of time will be saved (see illustration).

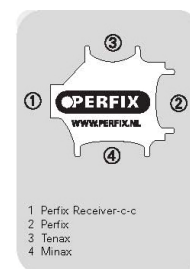
5. Does PERFIX® cause wrinkles?

If foils are used, such as bisonyl, some slight wrinkling can occur. This has been reduced by adapting the sail ring. And it can be reduced even more by increasing the buttonhole to 14 mm. (specifically with thicker canvas).

6. Can PERFIX® always easily replace other systems?

It is possible that the buttonholes need to be enlarged to 13 mm when switching over to PERFIX®. In practice this means following the procedure below:

		Switch-over to PERFIX®	Ø 3 - 3,4 mm Depending on material, ask a specialist  Some materials require special treatment!	Ø 13 mm 
Tenax / Tomax		☺	3 - 3,4 mm = PERFIX® ⚠️ = NOT possible	9 mm → 13 mm enlarge for PERFIX®
Minax		☺	3 - 3,4 mm = PERFIX®	13 mm = PERFIX®
Push-button		☺	3 - 3,4 mm = PERFIX®	5 mm → 13 mm enlarge for PERFIX®
Norwegian knot		☺	3 - 3,4 mm = PERFIX®	8 mm → 13 mm enlarge for PERFIX®
Turn-button		✘	2 x 3 - 3,4 mm ⚠️ NOT possible	> 13 mm ⚠️ NOT possible
Lift-the-DOT		✘	3 - 3,4 mm = PERFIX®	> 13 mm ⚠️ NOT possible



1 Perfix Receiver-c-c
2 Perfix
3 Tenax
4 Minax

PERFIX® Key (code 9000)

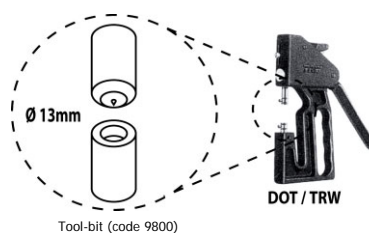
PERFIX® hole punch (13 mm)



PERFIX® Key (code 9200)

7. Are tool bits available for pliers?

A tool bit is available for the DOT/TRW-pliers in order to make a 13 mm hole in the canvas.



Tool-bit (code 9800)

8. Can you tell on which side of the button the hook is?

New in production are buttons with a special marking, indicating which side the hook is pointing (see illustration).

